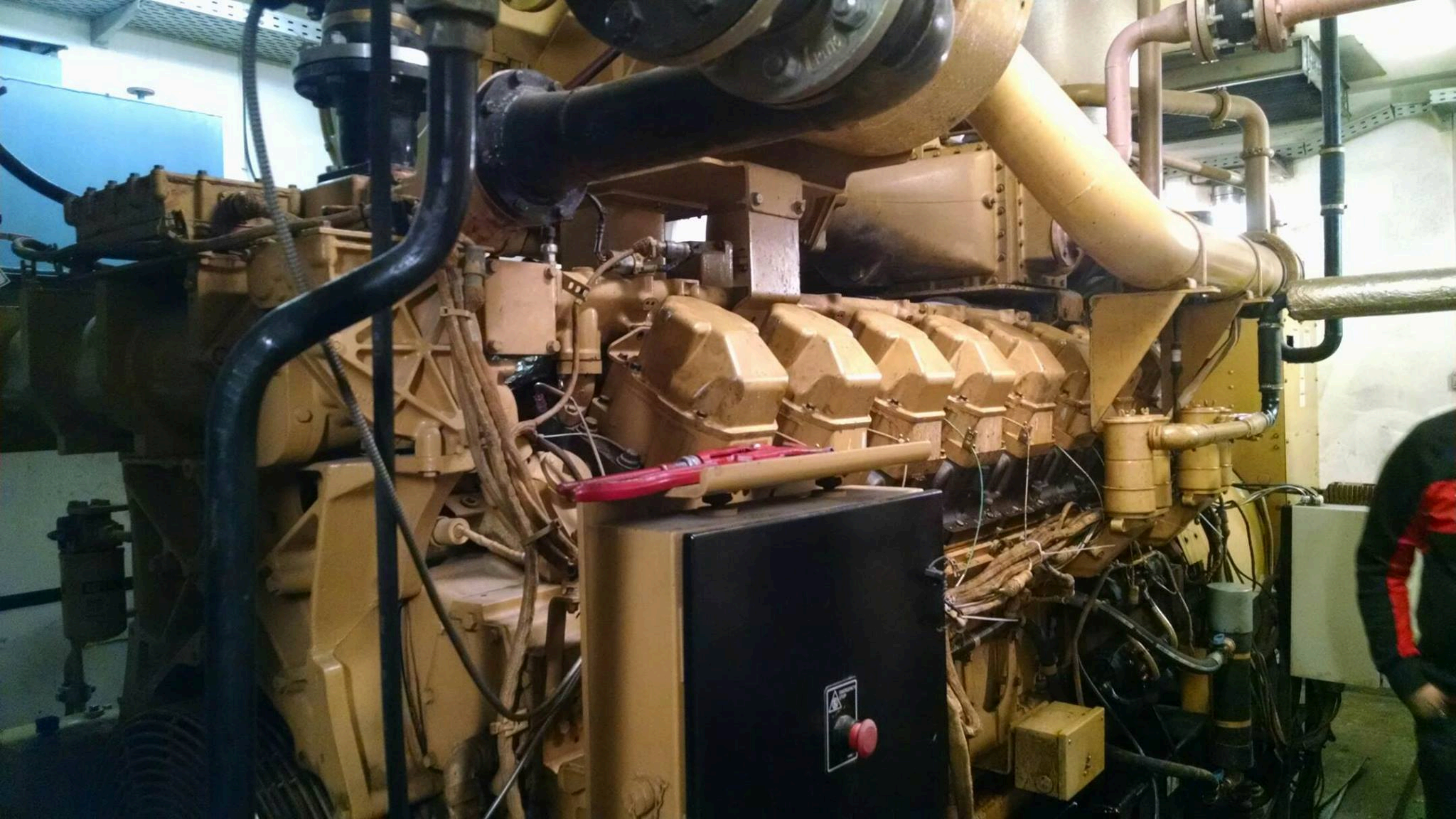


DASTEC S.R.L.
Representantes / Distribuidores Exclusivos
Argentina
Tel: (+54 11) 5352 2500
Email: info@dastecsrl.com.ar
Web: www.dastecsrl.com.ar







CATERPILLAR®

GENERATOR SET

ENGINE MODEL 3516

YEAR 2001

1465 KVA 1172 KW 0.8 COS ϕ 50 HERTZ
PRIME STANDBY X CONTINUOUS

GENERATOR DATA

GENERATOR DATA DESCRIPTION
WITHOUT FAN RATING

3 PHASE \sim 6 WIRE
 X WYE DELTA
 X SERIES PARALLEL
GENERATOR 400 VOLTS 2115 AMPS
EXCITATION 20 VOLTS 5.3 AMPS
 824 FRAME 1500 REV/MIN

MAXIMUM TEMPERATURE RISE 105 °C BY RESISTANCE

40 °C AMBIENT 1000 METERS ALTITUDE

CLASS H INSULATION

ENCLOSURE TYPE

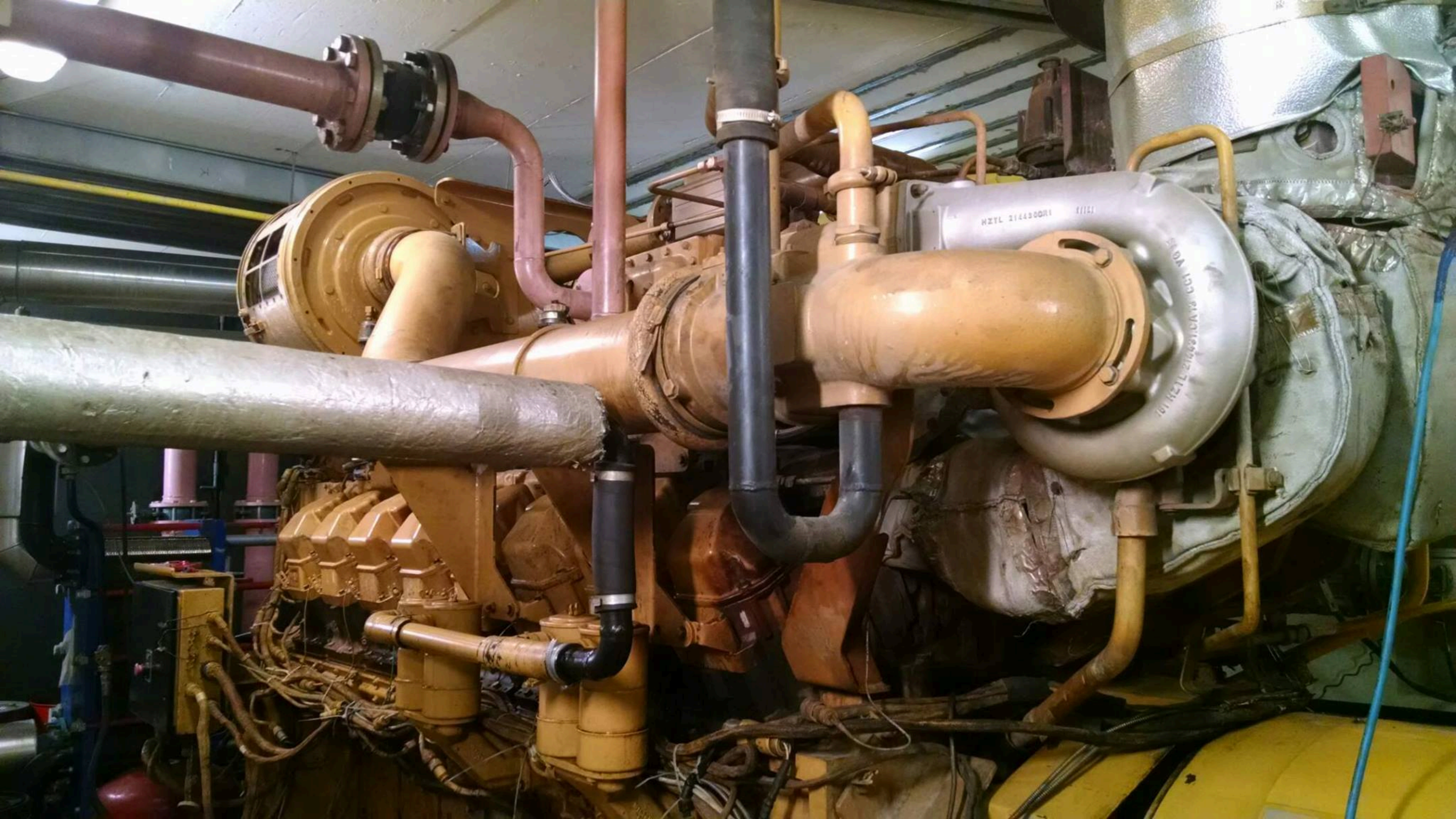
INCLUDE SERIAL NUMBER AND GENERATOR PART
NUMBER FROM GENERATOR SERIAL NUMBER PLATE
WHEN ORDERING PARTS AND IN CORRESPONDENCE.

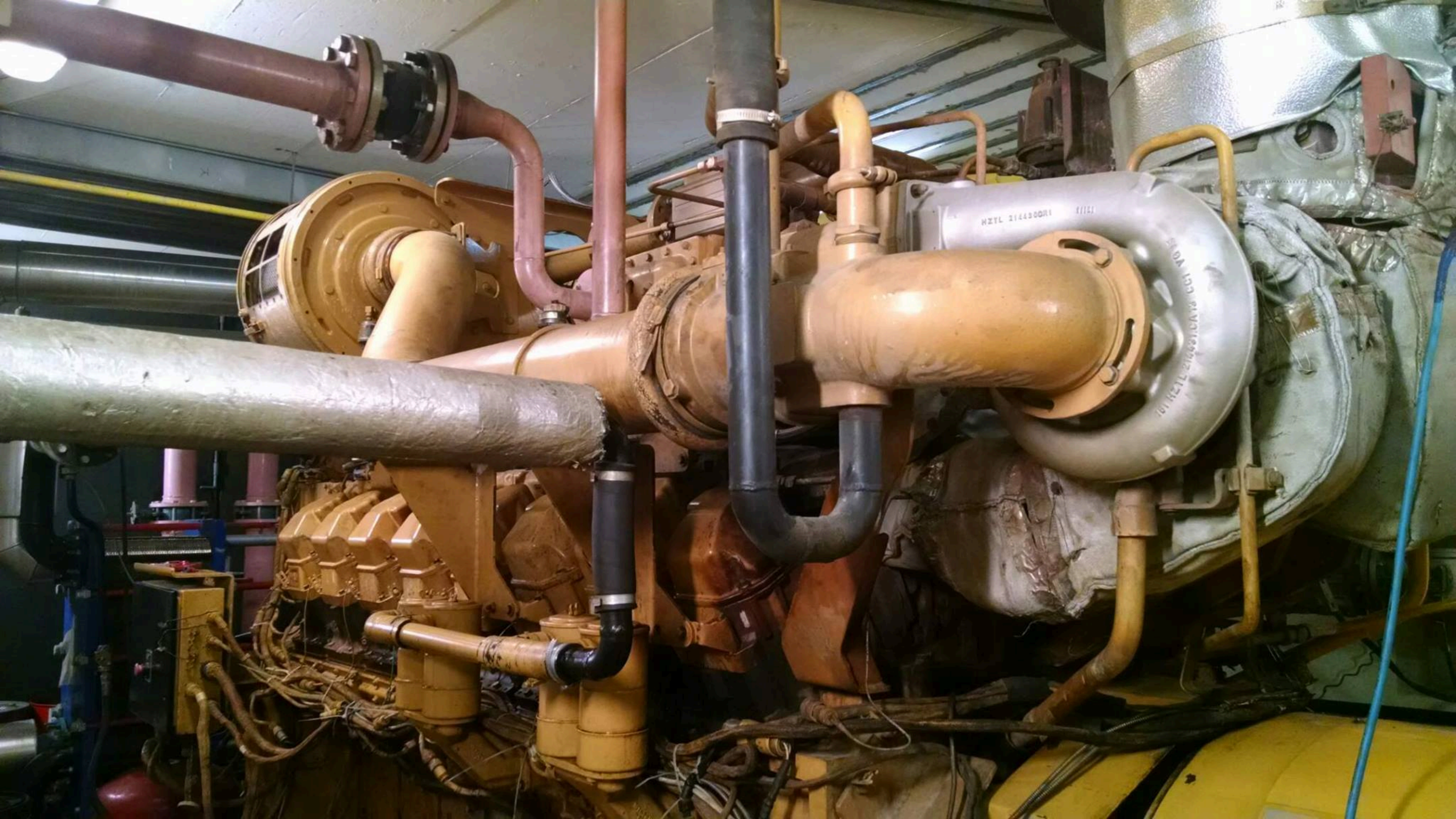
GEN S/N: 5WN01904

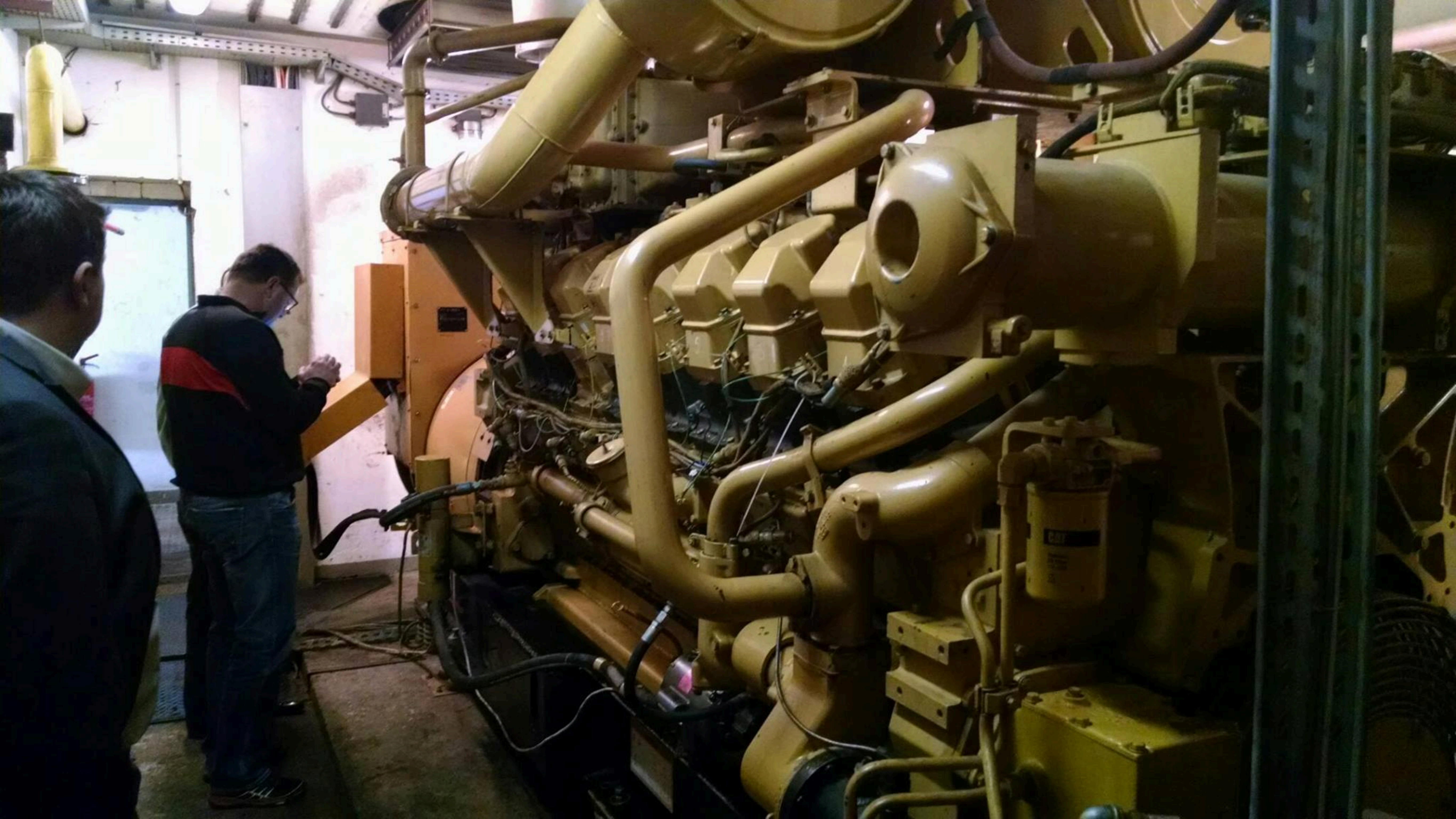
ESO: NFBCH

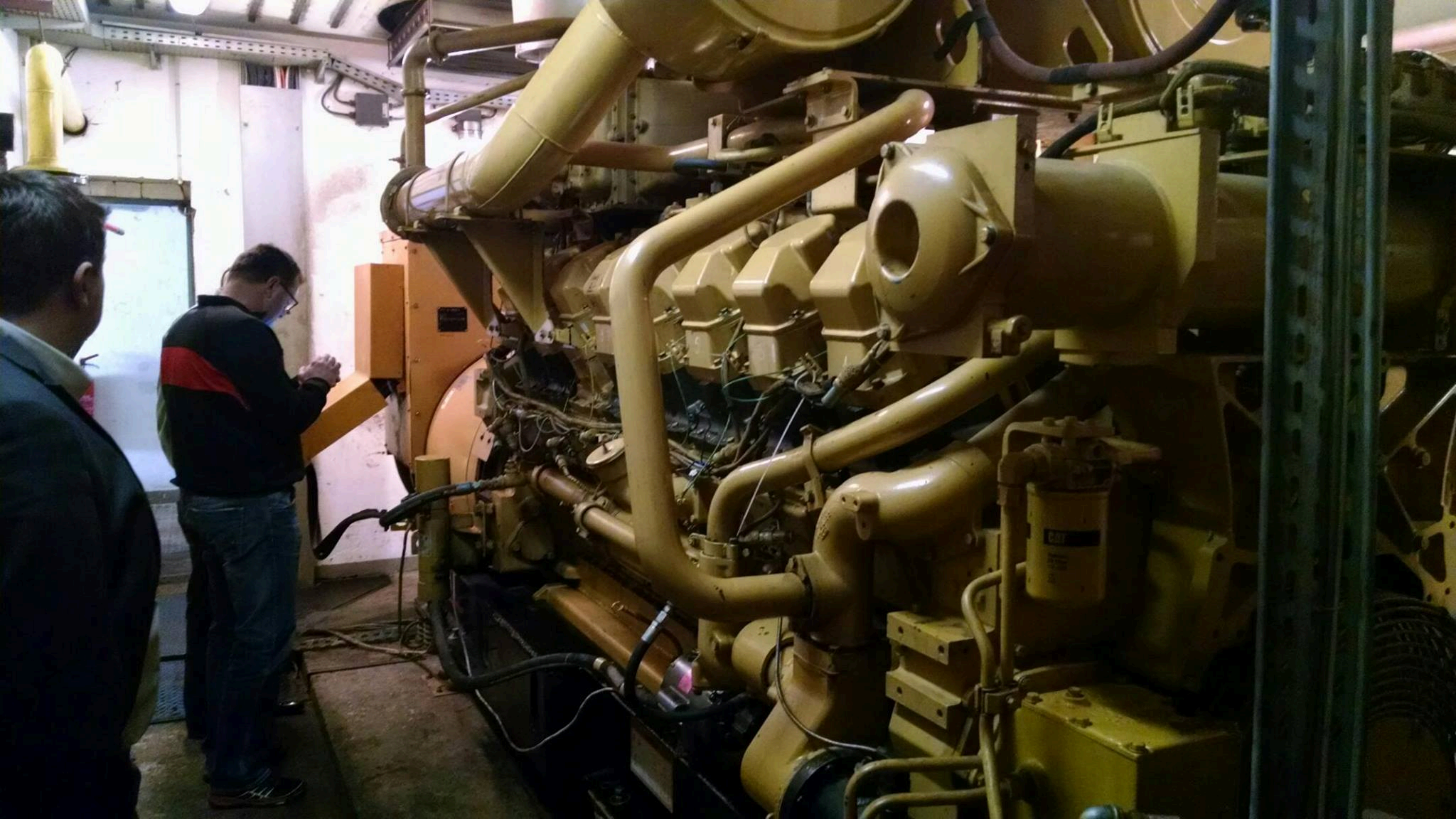
118-8452













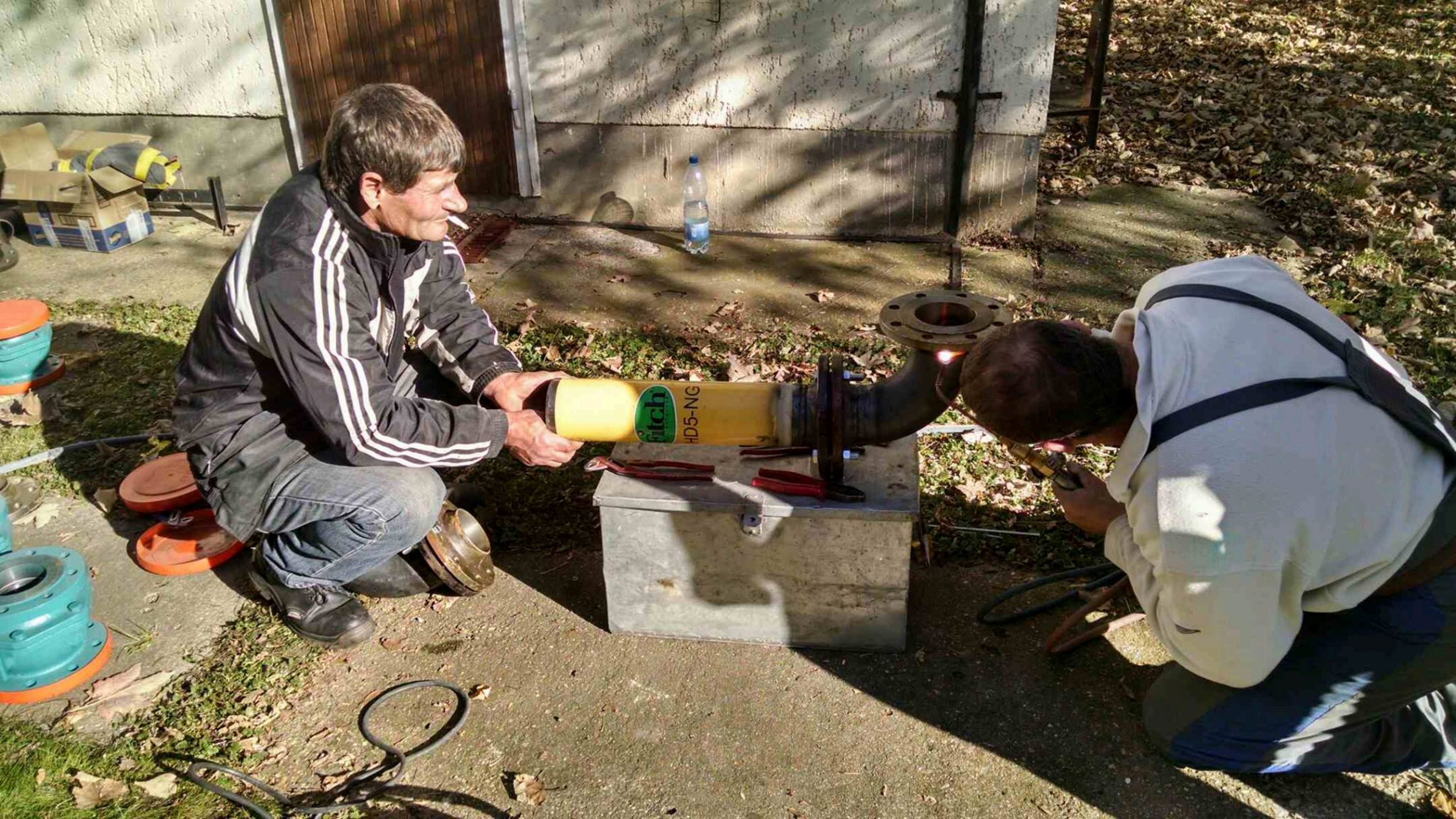
Fitch
FULL CATALYST

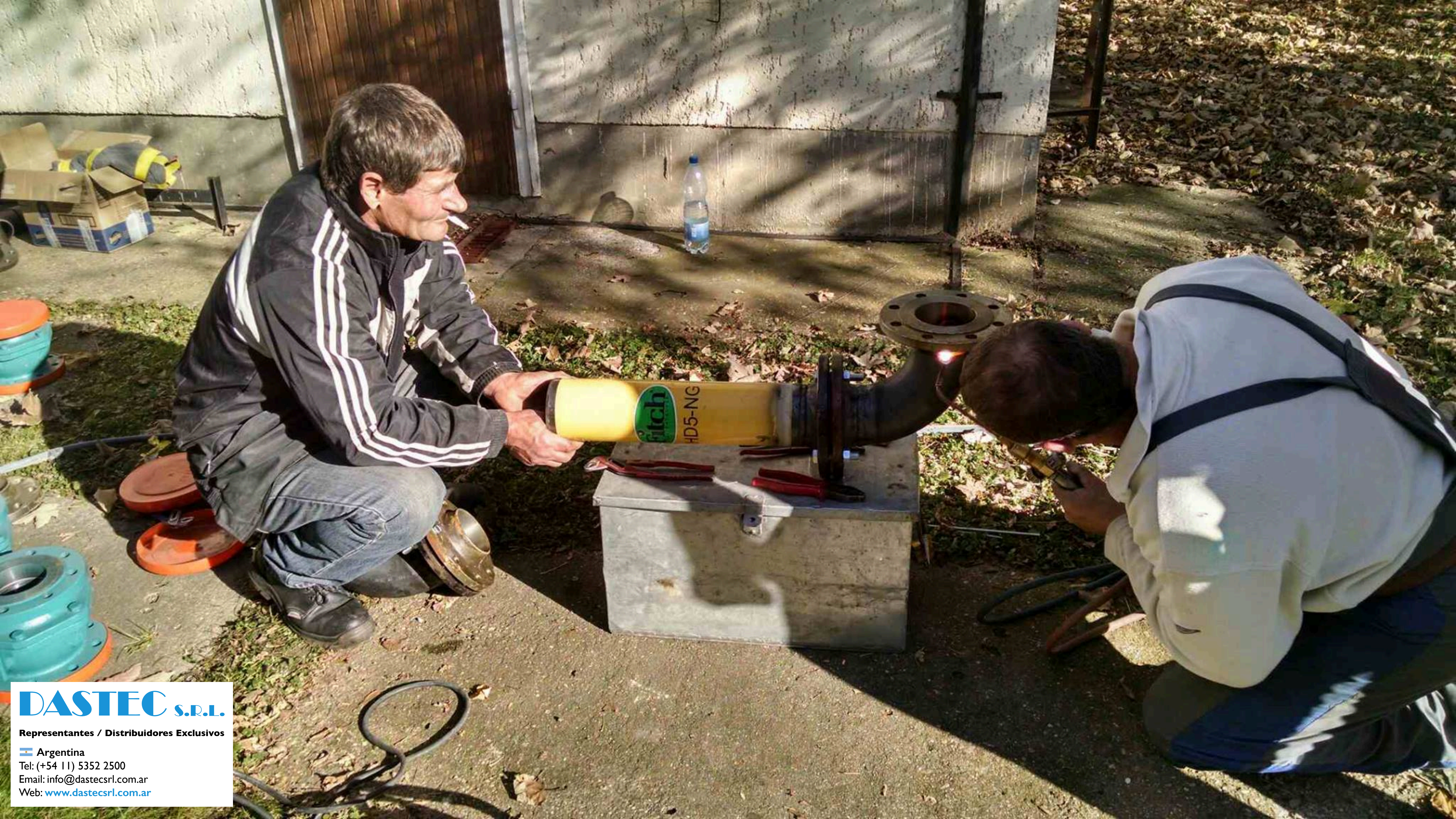
HD5-NG



Fitch
FULL CATALYST

HD5-NG





DASTEC S.R.L.

Representantes / Distribuidores Exclusivos

Argentina
Tel: (+54 11) 5352 2500
Email: info@dastecsr.com.ar
Web: www.dastecsr.com.ar